

Biotinylated Human IL-15RA&IL-15 Protein (Primary Amine Labeling)

Cat. No. IL1-HM1R5B

Description

Source	Recombinant Biotinylated Human IL-15RA&IL-15 Protein (Primary Amine Labeling) is expressed from HEK293 with His tag at the C-Terminus. It contains Ile31-Ser108(IL-15RA)&Asn49-Ser162(IL-15).
Accession	Q13261-1(IL-15RA)&P40933-1(IL-15)
Molecular Weight	The protein has a predicted MW of 23.8 kDa. Due to glycosylation, the protein migrates to 25-28 kDa&30-35 kDa based on Tris-Bis PAGE result.
Endotoxin	Less than 1EU per ug by the LAL method.
Purity	> 95% as determined by Tris-Bis PAGE

Formulation and Storage

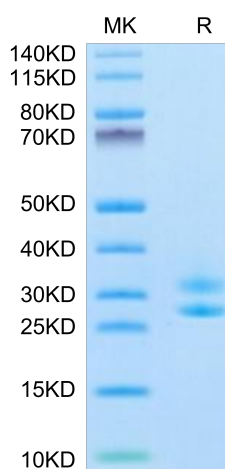
Formulation	Lyophilized from 0.22µm filtered solution in PBS (pH 7.4). Normally 8% trehalose is added as protectant before lyophilization.
Reconstitution	Centrifuge the tube before opening. Reconstituting to a concentration more than 100 µg/ml is recommended. Dissolve the lyophilized protein in distilled water.
Storage	-20 to -80°C for 12 months as supplied from date of receipt. -20 to -80°C for 3-6 months in unopened state after reconstitution. 2-8°C for 2-7 days after reconstitution. Recommend to aliquot the protein into smaller quantities for optimal storage. Please minimize freeze-thaw cycles.

Background

Interleukin-15 receptor alpha (IL-15R alpha) is a high affinity IL-15 binding protein that is crucial for mediating IL-15 functions such as memory CD8 T cell proliferation and NK, NK/T cell, and intestinal intraepithelial lymphocyte development.

Assay Data

Tris-Bis PAGE

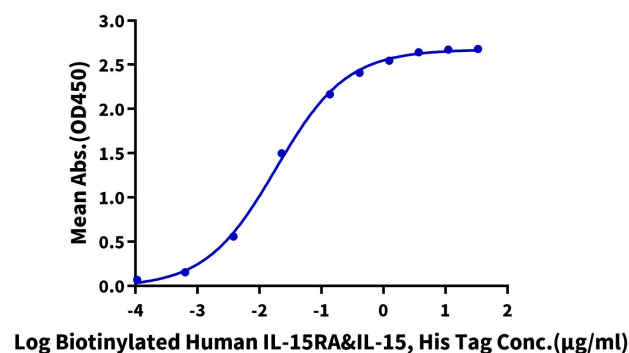


Biotinylated Human IL-15RA&IL-15 (Primary Amine Labeling) on Tris-Bis PAGE under reduced condition. The purity is greater than 95%.

ELISA Data

Biotinylated Human IL-15Ra&IL-15, His Tag ELISA

0.2µg Human IL-2 R beta, hFc Tag Per Well



Immobilized Human IL-2 R beta, hFc Tag at 1µg/ml (100µl/well) on the plate. Dose response curve for Biotinylated Human IL-15Ra&IL-15, His Tag with the EC50 of 18.5ng/ml determined by ELISA.